



**NINCDS COLLABORATIVE
PERINATAL PROJECT
A User's Guide to the Project and Data**

**Volume III
Variable File**

**Part B: Data Item Creation
Methods**

December 1983

**Prepared for
NINCDS National Institute of Neurological
and Communicative Disorders and Stroke
under Contract 231105150**

 **Battelle**
Pacific Northwest Laboratories

LEGAL NOTICE

This report was prepared by Battelle as an account of sponsored research activities. Neither Sponsor nor Battelle nor any person acting on behalf of either

MAKES ANY WARRANTY OR REPRESENTATION, EXPRESS OR IMPLIED, with respect to the accuracy, completeness, or usefulness of the information contained in this report, or that the use of any information, apparatus, process, or composition disclosed in this report may not infringe privately owned rights, or

Assumes any liabilities with respect to the use of, or for damages resulting from the use of, any information, apparatus, process, or composition disclosed in this report.

**NINCDS COLLABORATIVE PERINATAL PROJECT:
A USER'S GUIDE TO THE PROJECT AND DATA**

**Volume I'1.
Variable File**

Part B. Data Item Creation Methods

**GP Watson
AP Hinds**

December 1983

**Prepared for
National Institute of Neurological
and Communicative Disorders and Stroke
under Contract 2311105150**

**Battelle
Pacific Northwest Laboratories
Richland, Washington 99352**

INTRODUCTION

OBJECTIVES AND USER ASSUMPTIONS

Volume III, Variable File, provides users with a complete list of all data items included on the NCPF Variable File tape and documentation for how these items were created. The user of this volume is assumed to be a researcher interested in obtaining data from the variable file.

STRUCTURE OF THE VARIABLE FILE AND VOLUME III

The variable file summarizes and compiles some of the most useful items on the master file. In some cases, information from two or more forms are combined, allowing users to shorten or avoid lengthy interrogations on the master file. The variable file contains data on all aspects of the perinatal study, with the exception of data pertaining to seven or eight year exams.

Each field on the variable file was obtained through computer interrogation of the master file. Volume III contains an index of data items on the file and descriptions of the logical procedures followed in creating the fields derived.

Part A, Index of Data Items, contains a computerized listing of all data items contained in the variable file. This index includes, for each data item, a unique data item identification number, location on the tape, the data item name and definition of codes used.

Part B, Data Item Creation Methods, contains detailed documentation for how each variable was created. For each item on the file, we've included a description of the field, location on the tape, identification number, date of approval for use in the perinatal study and the method used in creating or calculating the data item.

Three types of forms have been used in documenting data items described in Part B. The most frequently used contains a description of the field, tape location of the variable, approval date, remarks (interval codes or comments made by the NCPF staff), and card/column sources for data related to codes and recodes used. Procedures followed in coding variables are described on a second type of form, which contains a description of the field, tape location and approval date. Procedures appear in lieu of remarks and coding information. The third type of form contains coding information for variables

classified as group/interval codes. These forms are identical to the first type of form, with the exception that card/column sources are omitted.

In Volume III, data items contained in the variable file are ordered by tape location. A data item identification number (5123....VAR, for example), also ordered consecutively, allows investigators to cross reference data items to other volumes of this user's guide. Names given for data items in Volume III are given as they appear on MINOS records and tapes and also as terse, stylized data item names created for the User's Guide.

All data items in the variable file have been referenced in Volume III, including group/interval codes and descriptions of basic cohorts. Each data item stands alone with the exception of switch codes for OB-60 (5012....VAR), PED-8 (5411....VAR) and PED-12 (5639....VAR). The switch location indicates if any data on specific diseases or conditions are present, while subsequent locations indicate presence or absence of specific conditions. Researchers will find it easiest to determine first if data exist by examining the switch location before going to codes for the specific condition. This procedure will also prevent the false conclusion that a disease or condition did not exist, when in reality, no data were available for any conditions.

EXAMPLE USE OF VOLUME III

The most likely point of entry into Volume III will be from one of the indexes where all data items are listed. For data items of interest that are in the variable file, researchers will be directed to this volume.

Suppose, for example, you examine the alphabetic glossary and discover that the item "Gestation at Delivery" (5123....VAR) is at tape location 1101-1102 of the 1968 variable file. To find out how gestation at delivery was calculated, you would begin with Part A. Part A reveals that the codes for this data item were as given: that is, the number of weeks for gestation at delivery would be from 1 to 42, as given in tape locations 1101 and 1102. If a 1101-04 were present on this tape location, the user can assume that gestation at delivery was calculated. You would then go to Part C to find out what cards from the master file were used in determining gestation at delivery, or if some other method was used. Part C reveals that cards 1901-2401 (PED-1), and 1940-2401-44 were used in determining date of birth, while card 6014 (OB-4) was

used in obtaining LMP date. Additional cards, used in the absence of the 1401 series, included cards 1402-5402, 1403, 0405, 1406-4406, 1408-5408, 1410, 1411 and 1414. The calculation of weeks was performed by determining the number of days between the date of birth and date of LMP, dividing this result by 7 and rounding off to the nearest week.

MASTER FILE CARD NUMBER AND WIMB CASE NUMBER RATIONALE

Computer cards for each WFF study form are numbered to reflect their origin and possible revisions. Card numbers are assigned to identify the type of data (subject), the presence of multiple cards in a series, WFF study form and form revisions. The first five digits of each card on the master file are the card number. The study forms and card numbers are given in Figure 1.

The first fourteen columns of each master file computer card contain the master file card number and the WIMB case number. Table 1 identifies the function of each of these columns.

TABLE 1. Derivation of Master File Card Number
and WIMB Case Number.

<u>Contents</u>	<u>Columns</u>
Master File Card Number	
card identifier	1
general subject matter	2
form number	3-4
revision code	5
WIMB Case Number	
collaborating institution	6-7
type of patient selection	8
gravidity identification number	9-12
order of the pregnancy	13
identifies child or gravida	14

Column 1 identifies multiple cards in a series. It contains a zero for cards unique to a particular form (that is, no other cards are present), for example 00-1, or for cards where repetitive data are contained. Cards for 00-2 are an example of this second type; no new categories of information are

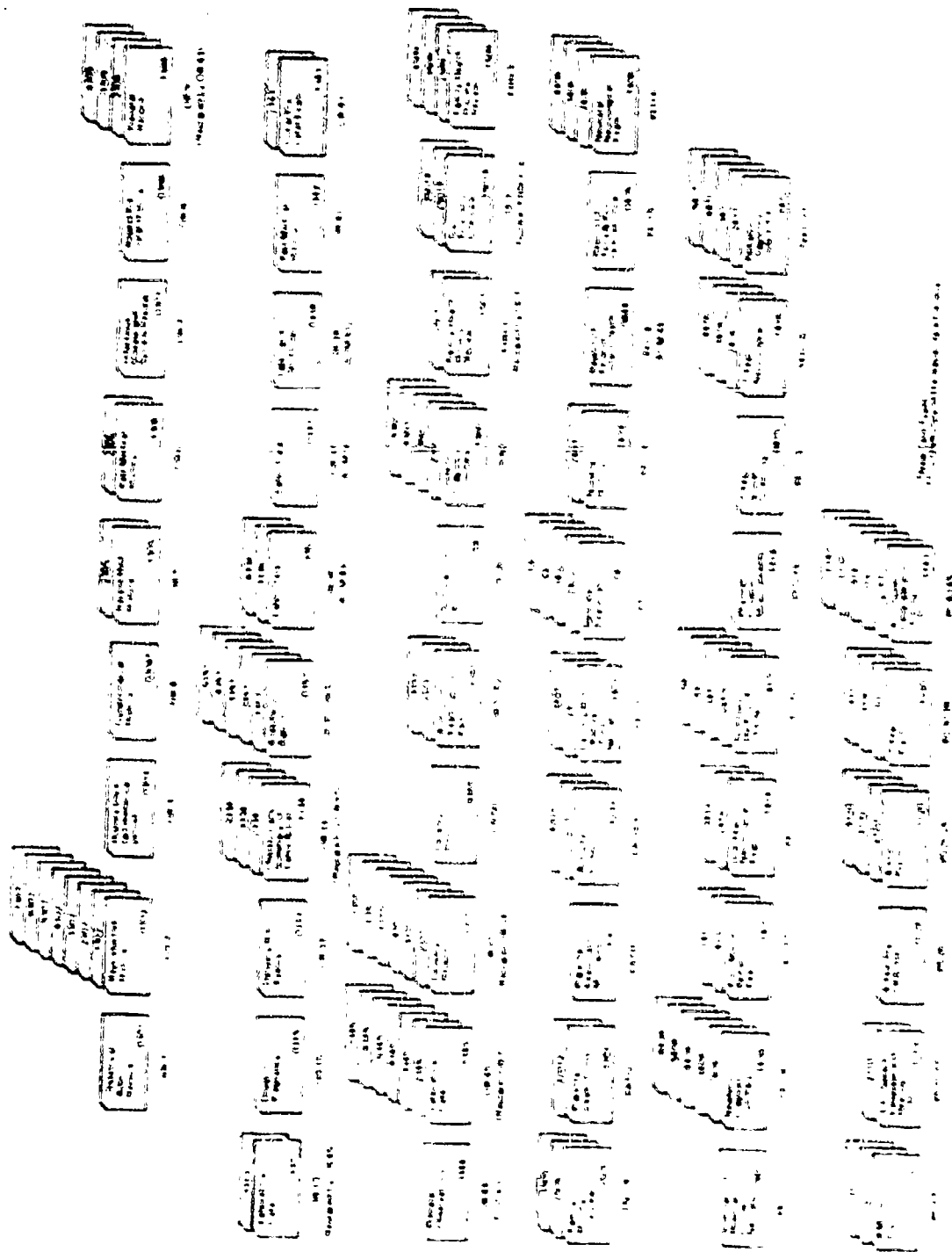


FIGURE 1. Cards on the Master Data File

included on successive cards, but previous births in excess of four must be recorded on an add-on card. For card series where data entered are unique to a card and more than one card is required to complete the series, a "1" is used to designate the first card, for example OB-5, OB-57, PATH-2 and PED-14 are exceptions to these rules.

The second digit on the card reveals the general subject matter covered by data on the card. All cards containing information pertaining to obstetrics, for example, are designated by a "3" in column 2; family histories are designated by a "5"; pathology with a "2"; pediatrics, with a "4"; and psychological testing with a "1".

Columns three and four reveal the form number. In the case of forms where old and new forms having different numbers are included together, the number of the latest form appears on the master file. This rule does not apply to data abstracted from several forms by NICHD staff (PDI forms).

Column 5 of the card contains a revision code indicating which form or combination of forms was used in arriving at data on a particular card. A typical card will have one to three revision codes, with a zero indicating the first version of a form and "1", "2", and "3" indicating later revisions. As a rule, revision codes used on cards differ from card to card; investigators should check the definition of codes provided in Volume II to determine the meaning of revision codes used.

Each woman and child studied in the project received a unique case number (NICHD case number) composed of nine digits, recorded in columns 6 through 14 of all master file cards. The case number identified the institution, the mother and the child. The first two digits represented the collaborating institution (see Table I). The third digit indicated the type of patient selection. A "1" was used for patients selected for the central core study; a "6" indicated that a patient had been transferred from one institution to another, and a "7" indicated that the patient was part of a special study undertaken by the collaborating institution. The fourth through seventh digits were used to identify the gravida, while the eighth digit identified the order of the pregnancy of a given gravida in the project. The ninth digit was used to identify the gravida or child of the pregnancy; "9" indicated the gravida, "0" indicated the child of a single birth, "1" indicated the first child of a multiple birth, "2" indicated the second child of a multiple birth, etc.

TABLE 2. Collaborating Institutions and Their Code Number
(Columns six and seven of all master file cards.)

05 - <u>Boston, Massachusetts</u> Harvard Medical School Boston Lying-In Hospital Children's Hospital Medical Center	50 - <u>Minneapolis, Minnesota</u> University of Minnesota Hospital Health Sciences Center
10 - <u>Buffalo, New York</u> University of Buffalo Children's Hospital	55 - <u>New York, New York</u> New York Medical College Metropolitan Hospital
15 - <u>New Orleans, Louisiana</u> Charity Hospital Tulane University School of Medicine Medical Center Louisiana State University	60 - <u>Portland, Oregon</u> University of Oregon Medical School
20 - <u>New York, New York</u> Columbia University College of Physicians & Surgeons Columbia-Presbyterian Medical Center	65 - <u>Philadelphia, Pennsylvania</u> University of Pennsylvania Pennsylvania Hospital The Children's Hospital of Philadelphia
30 - <u>Baltimore, Maryland</u> The Johns Hopkins University School of Medicine The Johns Hopkins Hospital	70 - <u>Providence, Rhode Island</u> Brown University Child Study Center
40 - <u>Richmond, Virginia</u> Virginia Commonwealth University Medical College of Virginia	80 - <u>Memphis, Tennessee</u> University of Tennessee College of Medicine Gallier Hospital

DATA ITEM IDENTIFICATION AND NAMING

The NCPP data base contains over 6700 different data items and blank filler locations on computer files. We have assigned each of these a unique identification and a terse, stylized name. Because names were chosen to facilitate use of this guide, they do not replicate names used by NIND during the active phase of the project. Users should consult appropriate documentation before using data items from the master, variable or work files (Volumes II, III and IV).

The data item identifiers consist of 11 characters. At the far left are four unique numbers that were assigned sequentially. The next character is always a period and is followed by up to six characters. For data items in the master file, these characters describe the data collection form from which a data item was derived; for data items on the variable (VAR) or work (WRK) files, these characters indicate the appropriate file. If the right side is less than six characters, periods are inserted as shown in these examples:

2550..OB-34	an item from OB-34; on the master file
3650.PATH-3	an item from PATH-3; on the master file
5223....VAR	an item on the variable file
6340...X-10	an item on work file 10, Rupture of Membranes

We assigned the numbers sequentially as they appear in Volume V. For the master file, we followed the order in which the cards would be found within an NKSB case. All card columns are accounted for by one of our data item identifications. For the variable and work files, the numbers were assigned in the order that data items appear within a case.

We categorized each data item according to the person to whom the data refer, by the time of measurement and/or the time to which the item applies and by general type or subject area (Table 3). Then we assigned names to the data items using the following guidelines:

- The name and the three associated categories had to stand alone - they must describe the data item out of context.
- The first word in the data item name had to be an important or key word when all names were listed alphabetically as in Volumes VI and VII. Thus "cry, abnormal" was used rather than "abnormal cry" because a researcher is more likely to look for this item under "C" than under "A" in an alphabetic list.
- Secondary i.e., words were preceded with a semicolon to facilitate preparation of the permuted index. For example, "abruptio; placenta" will be found under both the "A" and "P" portion of Volume VI.
- Qualifying words are delimited by commas and will not appear as keywords in Volume VI. Thus "abruptio; placenta, degree" will not be found in the "D" section.
- If medical terminology or usage has changed since the study was conducted, modern terms may be included and will be enclosed in brackets. Thus "cereblism; [Eaton's Syndrome]" will appear under both the "E" and "B" portions of Volume VI.
- If measurement units are associated with a data item name, they are enclosed in parentheses and placed at the end of the name as in "Birthdate (yr)."
- The categories (person, time and subject) are appended to the right of the data item name.

Definitions for each category used in naming data items are given in Table 4 at the end of this introduction. Additional information is given in Chapter 4 of Volume I.

Data item names thus assigned are terse and highly stylized; as we have already indicated, they are not the names used by NIMH during the active phase of the project. For some way to develop standardized names that would stand alone. These names are intended to facilitate a user's search for data items potentially useful in a research project. Before an item is used, a researcher should consult its complete description. For a data item from the master file, e.g., 001-0034, the data item should be traced to the appropriate study form, e.g., 00-04, located in Volume II. A variable file data item, e.g., 0013...00, is traced to Volume III, where it is defined and its original source given. A data item from a work file is traced to Volume II for its description.

Some data items contained in the indexes may include the notation "NIMH 000." These items are either inaccurate or an alternative data item is available that gives better information. Users will find more appropriate data items by consulting one of the indexes to the data items (Volumes I, II and III).

TABLE 3. Abbreviations for Person, Time and Subject Categories

<u>Person</u>	<u>Time</u>	<u>Subject</u>
Mother	General	Administrative
Father	Preconception	Anesthesia
Parents	Regulation	Drug Administration
Fetus	Prenatal	Clinical Lab
Child	Admission	Current Pregnancy
* Surrogate	Intervention	Environ. Exposure
Family	Delivery	Events
Infant	Post Partum	Hearing
	Neonatal	Hospitalizations
	Four month	Language
	Eight month	Lineage
	One year	Malformations
	Three year	Impl. & Cond.
	Four year	Med. History
	Seven year	Mutations
	Eight year	Neurological Exam
		Observations
		Pathology
		Physical Exam
		Procedures
		Psych. Exam
		Reproductive Hist.
		Serology
		Sociodem. Info
		Speech
		Vision
		Work History
		X-ray
		Summary
		Gyn. History
		Spectral Studies
		Fam/Genetic Hist.
		SLN Exam

TABLE 4. Definition of Person, Time
and Subject Categories

PERSON	DEFINITION
Mother	Only resistant bearing the "study pregnancy"; biologic mother of the "study child"; grand.
Father	Biologic father of the study child or "study pregnancy"; in the case of non-paternity, the "biologic father" the "father of birth" and "resistant" raised on the mother of the "biologic" not necessarily related biologically to the study child.
Placenta	The organ of metabolic and physical interchange between the fetus and mother; also included in this category are gross and microscopic pathologic data from examination of the umbilical cord.
Fetus	Conceptus; the product of conception including the embryonic stage, i.e., from conception to the moment of birth.
Child	Product of the study pregnancy from the moment of birth onward; study child.
Maternal	Persons or persons substituting for the mother of a study child, e.g., surrogate mothers, foster parents or guardians.
Family	Person or persons biologically related to the mother or father or the study child.
Siblings	Child or children having one or both of the same biologic parents as the study child; siblings; half siblings; full siblings.

**TABLE 4. Definition of Person, Time
and Subject Categories (Cont.)**

<u>TIME</u>	<u>DEFINITION</u>
General	Data with no pertinent time period or data pertaining to more than one time period.
Precanception	Data pertaining to the period prior to conception of the study pregnancy.
Registration	Data collected at the time of study mother's registration in the study.
Prenatal	Data pertaining to the period from conception of the study pregnancy to delivery of the study child.
Admission	Data collected at the time of study mother's admission to the hospital for delivery of the study child.
Intrapartum	Data pertaining to the period from admission for delivery or onset of labor to delivery of the study child.
Delivery	Data pertaining to the time period during which delivery of the study child occurred.
Post Partum	Data (pertaining to the study mother) collected during the period immediately following birth of the study child.
Neonatal	Data pertaining to the study child during the period from birth to one month of age; the majority of these data were collected prior to or at the time a study child was discharged from the hospital.
Four Month	Data collected at the time of the four month examination of the study child.
Eight Month	Data collected at the time of the eight month examination of the study child.
One Year	Data collected at the time of the one year examination of the study child.
Three Year	Data collected at the time of the three year examination of the study child.
Four Year	Data collected at the time of the four year examination of the study child.
Seven Year	Data collected at the time of the seven year examination of the study child.
Eight Year	Data collected at the time of the eight year examination of the study child.

**TABLE 4. Definition of Person, Time
and Subject Categories (Cont.)**

SUBJECT	DEFINITION
Administrative	Data pertaining to the administrative aspects of the study.
Anesthesia	Data on medications and procedures used to obtain anesthesia.
Clin. Impression	Impression of abnormality or dysfunction gained by an examiner following evaluation of clinical signs and symptoms and including a subjective component.
Clinical Lab	Data obtained from laboratory examination of clinical specimens.
Current Pregnancy	Personal data and medically relevant information pertaining to the study pregnancy for which the mother is enrolled.
Environ. Exposure	Data on exposure to occupational or other environmental entities or hazards.
Events	Data related to a specific event, occurrence or incidence.
Hearing	Data obtained from examination and testing of hearing function.
Hospitalizations	Data on specific hospital admissions or the number of hospitalizations.
Language	Data obtained from examination and testing of language function.
Linkage	Data on the genetic relationships of family members to the study mother, father or child.
Malformations	Data on the conditions in which failure of normal development has resulted in abnormal physical traits existing at the time of birth.
Diag. & Cond.	Data on specific diagnoses or conditions obtained from past medical history or examination during the study.
Med. History	Data obtained from the study participant or records relevant to past or current medical diagnoses or conditions.
Medications	Data on drugs or medications used.
Neurological Exam	Data obtained from observation and physical examination of the central nervous system.
Observations	Data obtained from observations not categorized elsewhere.
Pathology	Data obtained from clinical and anatomical pathological examination.
Physical Exam	Data obtained from physical examination of the study participant.
Procedure	Data relating to specific procedures performed on the study participant prior to or during the period of enrollment in the study.
Psych. Exam	Data obtained from the psychological examinations and observations.

**TABLE 4. Definition of Person, Time
and Subject Categories. (Cont.)**

SUBJECT	DEFINITION
Reproductive Hist.	Data pertaining to the outcome of pregnancies prior to and or during the period of enrollment in the study.
Serology	Data obtained from the laboratory examination of serum by specific immunologic methods.
Socioecon. Info	Data related to the social and economic characteristics and environment of the study participant.
Speech	Data obtained from examination and observation of speech function.
Vision	Data obtained from examination of the eyes.
Work History	Data pertaining to occupation and employment prior to and during the period of enrollment in the study.
X-Ray	Data on diagnostic x rays and diagnostic or therapeutic radiological procedures.
Summary	Data presented as a summary of data collected and recorded elsewhere.
Gyn. History	Medical history specifically related to the female genital tract, reproductive physiology and endocrinology.
Special Studies	Data pertaining to participation in other special organized studies conducted during the period of enrollment in the study.
Fam/Genetic Hist.	Data on the medical histories of family members genetically related to the study child.
SLH Exam	Data obtained from the speech, language and hearing examinations not specifically or exclusively related to one of these areas.

VARIABLE FILE FIELD DERIVATION METHOD

Field Description: NINDB Patient Location: 1-8 (4954...VAR)
Number Approved:
Revised:

This is the standard 8 digit NINDB patient described in Volume I. The meaning of each digit is:

<u>Digit</u>	<u>Codes</u>	<u>Meaning</u>
1,2	05,10,15,66,06,31, 37,45,50,55,60,66, 71,82,93	collaborating institution
3	1,6,7	type of patient selection 1 = core 6 = transfer 7 = non-core (special study)
4-7	0001-9999	gravida ID - unique within institution
8	1-9	order of pregnancy in the study 1 = first study pregnancy 2 = second study pregnancy etc.

VARIABLE FILE FIELD DERIVATION METHOD

Field Description: Plurality

Location: 9 (4955...VAR)

Approved: _____

Revised: _____

This 9th position of the NINDB patient number identifies the plurality of the child of the woman identified in the first 8 positions.

<u>Codes</u>	<u>Meaning</u>
0	child of single birth
1	1st child of multiple birth
2	2nd child of multiple birth
3	3rd child of multiple birth
4	4th child of multiple birth
Blank	no child

VARIABLE FILE FIELD DERIVATION METHOD

Field Description: Birth Switch

Location: 10 (3956...VAP)

Approved: _____

Revised: _____

The Birth Switch indicates the type of birth.

<u>Codes</u>	<u>Meaning</u>
1	single
2	twin
3	triplet
4	quad

VARIABLE FILE FIELD DERIVATION METHOD

Field Description: Repeat Switch

Location: 11 (4957...VAR)

Approved: _____

Revised: _____

0 = No repeat pregnancy registered in the study

1 = Repeat pregnancy or pregnancies registered in the study

VARIABLE FILE FIELD DERIVATION METHOD

Field Description: Order Within Repeat

Location: 12 (4958...VAR)

Approved: _____

Revised: _____

0 = No repeat pregnancy registered in the study

1 = 1st pregnancy registered in the study

2 = 2nd pregnancy registered in the study

3 = 3rd pregnancy registered in the study

etc.

VARIABLE FILE FIELD DERIVATION METHOD

Field Description: Cohort 1-A

Location: 13 (4959...VAR)

Approved: _____

Revised: _____

If a patient is in Cohort I-A (as defined in Volume 1, Appendix B), a "1" will appear in this position.

VARIABLE FILE FIELD DERIVATION METHOD

Field Description: Cohort 1-8

Location: 14 (4960...VAR)

Approved: _____

Revised: _____

If a patient is in Cohort I-B (as defined in Volume I, Appendix B), a "1" will appear in this position.

VARIABLE FILE FIELD DERIVATION METHOD

Field Description: Cohort 1-C

Location: 15 (4961...VAR)

Approved: _____

Revised: _____

If a patient is in Cohort I-C (as defined in Volume I, Appendix B), a "1" will appear in this position.

VARIABLE FILE FIELD DERIVATION METHOD

Field Description: Blank Location: 16

Approved: _____

Revised: _____

The location was purposely left blank in the creation of the variable file.

VARIABLE FILE FIELD DERIVATION METHOD

Field Description: Core-100 Core Code

Location: 17 (1963...VAP)

Approved: 4/25/69

Revised: _____

Remarks: _____

Card Sources	Columns	Codes	Recodes*
0001	80	1, 2 = Core 7 = Non-Core	1 Blank

*An asterisk in recode column means transfer codes verbatim.

VARIABLE FILE FIELD DERIVATION METHOD

Field Description: Walk-in Location: 18 (4964...VAR)

Approved: _____

Revised: _____

Remarks: _____

Card Sources	Columns	Codes	Recodes*
0001	76	0 = No Blank = No 1 = Yes	Blank * *

*An asterisk in recode column means transfer codes verbatim.

VARIABLE FILE FIELD DERIVATION METHOD

Field Description: Cohort I-G

Location: 19 (4965...VAR)

Approved: _____

Revised: _____

If a patient is in Cohort I-G (as defined in Volume I, Appendix B), a "1" will appear in this position.

VARIABLE FILE FIELD DERIVATION METHOD

Field Description: Cohort IID (REV)

Location: 20 (4966...VAR)

Approved: _____

Revised: _____

If a patient is in Cohort IID (as defined in Volume 1, Appendix 8), a "1" will appear in this position.

VARIABLE FILE FIELD DERIVATION METHOD

Field Description: Basic Document

Location: 21 (4967...VAR)

Cohort Switch

Approved: _____

Revised: _____

If a patient is in the Basic Document Cohort (as defined in Volume I, Appendix B), a "1" will appear in this position.

1 = Cohort 1c less abortions

VARIABLE FILE FIELD DERIVATION METHOD

Field Description: Labor and Delivery

Location: 22 (4968...VAR)

Switch (1 = OB-34, 2 = OB-55)

Approved: _____

Revised: _____

Since there was a major revision of the labor and delivery forms midway in the study, this switch was added to aid in analysis.

1 = OB34 data for case
2 = OB55 data for case

VARIABLE FILE FIELD DERIVATION METHOD

Field Description: Cohort IIA

Location: 23 (4969...VAR)

Approved: _____

Revised: _____

If a patient is in Cohort IIA (as defined in Volume I, Appendix B), a "1" will appear in this position.

VARIABLE FILE FIELD DERIVATION METHOD

Field Description: Cohort 118

Location: 24 (4970...VAR)

Approved: _____

Revised: _____

If a patient is in Cohort IIB (as defined in Volume I, Appendix B), a "1" will appear in this position.

VARIABLE FILE FIELD DERIVATION METHOD

Field Description: Cohort IIC

Location: 25 (4971...VAR)

Approved: _____

Revised: _____

If a patient is in Cohort IIC (as defined in Volume I, Appendix B), a "I" will appear in this position.

VARIABLE FILE FIELD DERIVATION METHOD

Field Description: Test File Case

Location: 26 (4972...VAR)

Approved: _____

Revised: _____

If this patient was on the test file, this variable was set to 1.

VARIABLE FILE FIELD DERIVATION METHOD

Field Description: Blank

Location: 27-30

Approved: _____

Revised: _____

These locations were purposely left blank in the creation of the variable file.

VARIABLE FILE FIELD DERIVATION METHOD

Field Description: Age of Gravida (Years)

Location: 31-32 (4974...VAR)

Approved: 5/19/69

Revised:

Remarks:

Card Sources	Columns	Codes	Recodes*
0001	72-73	10-58, 99 = Unknown	*

*An asterisk in recode column means transfer codes verbatim.

VARIABLE FILE FIELD DERIVATION METHOD

Field Description: Age of Gravida (Years) **Location:** 33 (4975...VAR)
Group/Interval Code _____ **Approved:** _____
 _____ **Revised:** _____

Remarks: _____

	Codes	Recodes*
Recode from Location 31-32 (4974...VAR) Age of Gravida (Years)	<14 (Codes 10-14)	1
	15-19	2
	20-24	3
	25-29	4
	30-34	5
	35-39	6
	40-44	7
	>45 (Codes 45-58)	8
	99 = unknown	9 = unknown

*An asterisk in recode column means transfer codes verbatim.

VARIABLE FILE FIELD DERIVATION METHOD

Field Description: Gestation at **Location:** 34-35 (4976...VAR)
Registration (Weeks) **Approved:** 5/19/69
Revised: _____

Remarks: _____

Card Sources	Columns	Codes	Recodes*
0001	74-75	01-50 99 (Unknown)	*

*An asterisk in recode column means transfer codes verbatim.

VARIABLE FILE FIELD DERIVATION METHOD

Field Description: Marital Status Location: 36 (4977...VAR)

Approved: _____

Revised: _____

Remarks: _____

Card Sources	Columns	Codes	Recodes*
0001	62	1 = Single 2 = Married 3 = Common Law 4 = Widowed 5 = Divorced 6 = Separated 9 = Unknown	*

*An asterisk in recode column means transfer codes verbatim.

VARIABLE FILE FIELD DERIVATION METHOD

Field Description: Trimester at

Location: 37 (4978...VAR)

Registration (Weeks)

Approved: _____

Revised: _____

Remarks: _____

Card Sources	Columns	Codes	Recodes*
0001	74-75	01-50, 99	1 = codes 01-14 2 = codes 15-27 3 = codes 28-50 9 = code 99

*An asterisk in recode column means transfer codes verbatim.

VARIABLE FILE FIELD DERIVATION METHOD

Field Description: Last Prior Outcome: Location: 38-39 (4979...VAR)
Survival Approved: 7/69
Revised:

Remarks: _____

Card Sources	Columns	Codes	Recodes*
0302 card. If no 0302 then all 1302-7302 cards present.	See attached procedure.	00 = No prior outcome 01 = Fetal Death 02 = Died within 24 hours 03 = Died after 24 hours but before 7 days 04 = Died 7 days to 27 days 05 = Died 28 days to 1 year 06 = Died after 1 year 07 = Still living 96 = Liveborn but died in same month and year as birth 97 = Liveborn but died in same year as birth 98 = Liveborn but died, age unknown 99 = Unknown survival	

*An asterisk in recode column means transfer codes verbatim.

VARIABLE FILE FIELD DERIVATION METHOD

Field Description: Last Prior Outcome: **Location:** 38-39 (4979...VAR)
Survival **Approved:** _____
 _____ **Revised:** _____

Last Prior Outcome: Survival

Source - 0302 card. If no 0302, then all 1302-7302 cards present. Number of prior products - cols. 17-18.

	Date of Termination cols.	Age at Death col.	Liveborn col.
Product Field 1	19-22	32	25
Product Field 2	34-37	47	40
Product Field 3	49-52	62	55
Product Field 4	64-67	77	70

1. Use all cards present. Each card contains data for up to four prior products.
2. If cols. 17-28 = code 00, recode case as "00 - No prior outcome." No further checks necessary.
3. Scan all cards for latest known date of termination (month and year). If month = 99 and year is known, use year. If year = 99, consider date as unknown. If no known date, classify as "99 - Unknown Survival."
4. Check corresponding liveborn column. If code = 0 or 2, recode case as "01 - Fetal Death." No further check necessary.
5. If liveborn col. ≠ 0 or ≠ 2, check corresponding age at death col.

Recode case as follows:

code 0	recode 07
1	02
2	03
3	04
4	05
5	06
6	96
7	97
8	98
9	99

6. Multiple Births - If latest known date present in more than one product field, classify case once according to last product field with that date. Recode as in "4" and "5" above.

VARIABLE FILE FIELD DERIVATION METHOD

Field Description: Last Prior Outcome: Location: 40-43 (4980...VAR)
Birthweight (Grams) Approved: 7/69
 Revised: _____

Remarks: _____

Card Sources	Columns	Codes	Recodes*
0302 card. If no 0302 then all 1302-7302 cards present	See attached procedure	0000 = No prior outcome 0001-7400 = As given in grams 9999 = Unknown	

*An asterisk in recode column means transfer codes verbatim.

VARIABLE FILE FIELD DERIVATION METHOD

Field Description: Last Prior Outcome:

Location: 40-43 (4980...VAR)

Birthweight

Approved: _____

Revised: _____

Last Prior Outcome: Birthweight

Sources - 0302 card. If no 0302 then all 1302-7302 cards present.

Number of Prior Products - cols. 17-28.

Date of Termination - cols. 19-22, 34-37, 49-52, 64-67.

Birthweight - cols. 29-31, 43-46, 58-61, 73-76.

1. Use all cards present. Each card contains data for up to four prior products.
2. If cols. 17-18 = code 00, recode case as "0000 - No prior outcome." No further check necessary.
3. Scan all cards for latest known date of termination (month and year). If month = 99 and year is known, use year. If year = 99, consider date as unknown. If no known date, classify case as "9999 - Unknown."
4. Using corresponding birthweight cols., convert pounds and ounces to grams. ("Weight Conversion" table is attached.) Recode case by birthweight in grams. If ounces unknown (code 99), assume 08 and convert as above. If pounds unknown (code 99), recode case as "9999 - Unknown."
5. Multiple Births - If latest known date present in more than one product field, classify case once according to last product field with that date. Convert corresponding birthweight and recode as in "4" above.

VARIABLE FILE FIELD DERIVATION METHOD

Field Description: Last Prior Outcome: **Location:** 40-43 (4980...VAR)
Birthweight **Approved:** _____
_____ **Revised:** _____

Weight Conversion: Pounds and Ounces to Grams

Use cards and cols. previously indicated in specifications.

CONVERSION FORMULA:

$$(\text{Lbs.} \times 453.59) + (\text{Oz.} \times 28.35) = \text{Grams}$$

NOTE: If ounces unknown (code 99), assume 08.
If pounds unknown (code 99), classify weight as unknown.

VARIABLE FILE FIELD DERIVATION METHOD

Field Description: Prior Pregnancies: **Location:** 44-45 (4981...VAR)
Number (Gravidity) **Approved:** _____
Revised: _____

Remarks: _____

Card Sources	Columns	Codes	Recodes*
0302 1-7302	17-18 17-18	00-28 99 = Unknown	*
1505	27-28	00-25 99 = Unknown	*

*An asterisk in recode column means transfer codes verbatim.

VARIABLE FILE FIELD DERIVATION METHOD

Field Description: Parity (Prior
Non-Abortion Pregnancies: \geq 20 weeks
Gestation)

Location: 46-47 (4982...VAR)
Approved: 4/10/69
Revised: _____

Remarks: _____

Card Sources	Columns	Codes	Recodes*
See attachment		00 = Prior pregnancy but no prior viable 01-28 = Number of prior viables 28 = No prior pregnancy 99 = Unknown	

*An asterisk in recode column means transfer codes verbatim.

VARIABLE FILE FIELD DERIVATION METHOD

Field Description: Parity (Prior
Non-Abortion Pregnancies: ≥20 weeks
Gestation

Location: 46-47 (4982...VAR)

Approved: _____

Revised: _____

Prior Non-Abortion Pregnancies (Parity or Viable Pregnancies)

The number of prior pregnancies with gestational interval >20 weeks is determined by scanning the data on the 0302 card. If no 0302 card is present then all the same fields on all 1302-7302 cards that are present are used. Cols. are the same for all cards.

Calculations

Number of Prior Non-Abortion Pregnancies = Number of Prior Pregnancies
- 2 Prior Pregnancies <19 weeks gestation

Data Sources

Total Number of Prior Pregnancies - cols. 17-18. If code 00, recode case as "88 - No Prior Pregnancy" and no further checks are necessary.

Number of Prior Pregnancies with Gestation Interval <19 weeks

To determine the number of prior pregnancies products with gestational intervals <19 weeks both date of termination and weeks of gestation of all products must be analyzed.

1. Products with equal dates of termination and weeks of gestation are all <19 weeks are counted as one prior pregnancy with weeks <19.
2. If all weeks = code 99, classify case as "99 - Unknown."
3. Products with equal dates of termination and weeks of gestation are not all <19 weeks are not counted as one prior pregnancy of <19 weeks.
4. Products with different dates of termination and weeks of gestation are <19 weeks are counted as one prior pregnancy of 19 weeks or less.

Dates of Termination - cols. 19-22, 34-37, 49-52 and 64-67.

Weeks of Gestation - cols. 23-24, 38-39, 53-54 and 68-69.

Add List of Unk Parity (Vollman's Hand Review)

For all cases with no 0302 card present or with 0302 card present and coded "99" above, use 80000 card (CDC G9019 Card Tape). Move parity code (as given) into this variable.

VARIABLE FILE FIELD DERIVATION METHOD

Field Description: Prior Perinatal Loss

Location: 48-49 (4983...VAR)

Approved: _____

Revised: _____

Remarks: _____

Card Sources	Columns	Codes	Recodes*
See attached procedure		00 = No prior perinatal loss 01-07 = As given 08 = 8 or more 88 = No prior pregnancy 99 = Unknown	

*An asterisk in recode column means transfer codes verbatim.

VARIABLE FILE FIELD DERIVATION METHOD

Field Description: Prior Perinatal Loss

Location: 48-49 (4983...VAR)

Approved: _____

Revised: _____

Prior Perinatal Loss

1. 0302 card. If no 0302 card then all 1302-7302 cards present. If cols. 15-16 = code 00, recode case as "88 - no prior pregnancy." No further check necessary.
2. If cols. 15-16 ≠ code 00, then check cols. 25, 40, 55, 70 and cols. 32, 47, 62, 77. (Note: blanks may be present.)
 - a. Scan each col. 25, 40, 55, 70 and count number of times codes 0,2 are present.
 - b. Scan each col. 32, 47, 62, 77 and count number of times codes 1,2,3 are present.
 - c. Add together the counts from a. and b. and recode as below.
3. If cols. 25, 40, 55, 70 all = codes 1,3 and cols. 32, 47, 62, 77 all = codes 0,4,5, recode case as "00 - no prior perinatal loss."
4. For all cases not classified above, go to 1505 card. If cols. 27-28 = code 00, recode case as "88 - no prior pregnancy." No further check necessary.
5. If cols. 27-28 ≠ code 00, check cols. 64, 65 and 73.
 - a. If any col. = code 1-8, add the codes from these three cols. and recode sum as below.
 - b. If all cols. = code 0, recode case as "00 - no prior perinatal loss."
6. All cases not classified above but with any card 0302, 1302-7302, 1505 present, recode case as "99 - unknown."

<u>Sum</u>	<u>Recode</u>
1-7	01-07
8-28	08

VARIABLE FILE FIELD DERIVATION METHOD

Field Description: Prior Viable Births: **Location:** 50-51 (4984...VAR)
Number **Approved:** _____
 _____ **Revised:** _____

Remarks: _____

Card Sources	Columns	Codes	Recodes*
See attached procedure.		00 = Prior births but no viables 01-07 = As given 08 = 8 or more 88 = No prior pregnancy 99 = Unknown	

*An asterisk in recode column means transfer codes verbatim.

VARIABLE FILE FIELD DERIVATION METHOD

Field Description: Prior Viable Births: **Location:** 50-51 (4984...VAR)
Number **Approved:** 10/9/69
Revised: 10/23/69

Prior Viable Births: Number

1. 0302 card. If no 0302 card, then all 1302-7302 cards present. If cols. 15-16 = code 00, recode case as "88 - no prior pregnancy." No further check necessary.
2. If cols. 15-16 ≠ 00, then check weeks of gestation - cols. 23-24, 38-39, 53-54, 68-69. (Note: blanks may be present.)
 - a. Count number of cols. with codes 20-50, 99 present and recode sum as below.
 - b. If all cols. = codes 01-09, recode case "00 - Prior births but no viables."
3. For all cases not classified above, go to 1505 card. If cols. 27-28 = code 0, recode case as "88 - no prior pregnancy." No further check necessary.
4. If cols. 27-28 ≠ code 00, check cols. 65-67.
 - a. If col. 65 = code 0 and cols. 66-67 = code 00, recode case as "00 - Prior births but no viables."
 - b. If col. 65 = codes 1-8 and/or cols. 66-67 = codes 01-25, add together the codes from these cols. and recode sum as below.
5. All cases not classified above but with any card 0302, 1302-7302, 1505 present, recode case as "99 - Unknown."

<u>Sum</u>	<u>Recode</u>
1-7	01-07
8-33	08

VARIABLE FILE FIELD DERIVATION METHOD

Field Description: Cigarettes Per Day Now **Location:** 52-53 (4985...VAR)
Approved: 4/21/69
Revised: _____

Remarks: The source below the line in the table below is the
secondary source.

Card Sources	Columns	Codes	Recodes*
0303	63-64	00-61, 70, 80, 99	*
0308 See Tape Locations 75-80 (4994...VAR; 0B-8 First Date). Use data from card selected for this variable	63-64	00-61, 70, 80, 99	*

*An asterisk in recode column means transfer codes verbatim.

VARIABLE FILE FIELD DERIVATION METHOD

Field Description: Cigarettes Per Day Now **Location:** 54 (4986...VAR)
Group/Interval Code _____ **Approved:** _____
 _____ **Revised:** _____

Remarks: 0 = non smoker, 1 = smoker, 9 = unknown

	Codes	Recodes*
Recode from	0	*
Location 52-53	01-60	1
(4985...VAR)	61	1
Cigarettes per Day Now	70	1
	80	1
	99	9

*An asterisk in recode column means transfer codes verbatim.

VARIABLE FILE FIELD DERIVATION METHOD

Field Description: Prenatal Visits:

Location: 55-56 (4987...VAR)

Total Number

Approved: 5/19/69

Revised: 10/30/69

Remarks: _____

Card Sources	Columns	Codes	Recodes*
See attached procedure		01-97 98 = >98 99 = unknown	

***An asterisk in recode column means transfer codes verbatim.**

VARIABLE FILE FIELD DERIVATION METHOD

Field Description: Prenatal Visits: **Location:** 55-56 (4987...VAR)
Total Number **Approved:** 5/19/69
Revised: 10/30/69

Determination of Number of Visits

Sources:

Date of Registration: 0001 card, cols. 38-43

Date of Delivery: See Duration of Pregnancy (Tape location 1101-1102; 5920...VAR) for date of birth.

Actual Visits (Different Dates):

Presence of a 0303 card, cols. 15-20 = 1 visit

Each 0308 card, cols. 15-20 = 1 visit

Any 1309-4309 card, cols. 15-20 = 1 visit

0342 card, cols. 15-20 = 1 visit

Any 1343-2343 card, cols. 15-20 = 1 visit

Each 0344 card, cols. 19-24 = 1 visit

Date Fields: For cards 0303, 0308, 1309-4309, 0342, 1343-2343 date fields = cols. 15-20. For 0344 cards date fields = cols. 19-24.

Procedures:

1. Determination of period between Date of Registration and Date of Delivery. If either date unknown, classify as 99 (unknown).
 - a. Date of Registration = Start of period.
 - b. Date of Delivery = End of period.
 - c. Check required forms for dates falling within this time interval.
2. Count the number of visits on different dates.
Result = recode (2 digits). Result : 98 recode 98.

If all dates for all card types is unknown, the number of return visits = 1.

VARIABLE FILE FIELD DERIVATION METHOD

Field Description: Years Smoked at

Location: 57-58 (4988...VAR)

Registration

Approved: 5/19/69

Revised: _____

Remarks: _____

Card Sources

Columns

Codes

Recodes*

00000		Recodes	
0303	55-56	00-50, 80, 88, 99	*

*An asterisk in recode column means transfer codes verbatim.

VARIABLE FILE FIELD DERIVATION METHOD

Field Description: Date of LMP

Location: 59-64 (4989...VAR)

Approved: 9/30/68

Revised: _____

Remarks: _____

Card Sources	Columns	Codes	Recodes*
03041 If codes 000000, 77777 or 999999 check next source)	32-37		*
0001	50-55		*

*An asterisk in recode column means transfer codes verbatim.

VARIABLE FILE FIELD DERIVATION METHOD

Field Description: Date of PMP **Location:** 65-70 (4990...VAR)
Approved: 4/10/69
Revised: _____

Remarks: _____

Card Sources	Columns	Codes	Recodes*
03041	38-43	As given.	*

*An asterisk in recode column means transfer codes verbatim.

VARIABLE FILE FIELD DERIVATION METHOD

Field Description: Length of time to **Location:** 71-72 (4991...VAR)
become pregnant (Months) **Approved:** 5/19/69
Revised: _____

Remarks: _____

Card Sources	Columns	Codes	Recodes*
03041	47-48	00 = Not applicable, not trying 01-97 = As given 98 = 98 months or more 99 = unknown	*

*An asterisk in recode column means transfer codes verbatim.

VARIABLE FILE FIELD DERIVATION METHOD

Field Description: Sterility

Location: 73 (4992...VAR)

Investigation

Approved: 4/21/69

Revised: _____

Remarks: _____

Card Sources	Columns	Codes	Recodes*
03041	61	0 = No 1 = Yes 9 = Unknown	*

*An asterisk in recode column means transfer codes verbatim.

VARIABLE FILE FIELD DERIVATION METHOD

Field Description: Radiation Twelve Location: 74 (4993...VAR)
Months Prior to Registration Approved: 6/10/69
 Revised: 6/25/70

Remarks: _____

Card Sources	Columns	Codes	Recodes*
2306	22	Check all columns for the following codes:	
	27	1. all 0's	0 = None
	32	2. all 1's, 2's, 5's or any combination of 1's, 2's, or 5's, with or without 0's or 9's.	1 = (Abdomino-pelvic area only)
	37	3. all 3's, 4's, 6's, or any combination of 3's, 4's, or 6's, with or without 0's or 9's.	2 = (Other areas only)
		4. all other combinations of codes	3 = (Abdomino-pelvic and other areas)
		9. all 9's	9 = (Unknown)

*An asterisk in recode column means transfer codes verbatim.

VARIABLE FILE FIELD DERIVATION METHOD

Field Description: OB-8: First Date Location: 75-80 (4994...VAR)
 _____ Approved: 4/29/69
 _____ Revised: _____

Remarks: If only date = 99 for any portion (month, day, or year),
code as given.

Card Sources	Columns	Codes	Recodes*
all 0308 cards scan all cards for earliest known date if only date = 99 for any portion (month, day or year) code as given	15-20	(month) 01-12 (day) 01-31 (year) 59-66 99 = unknown	*

*An asterisk in recode column means transfer codes verbatim.

VARIABLE FILE FIELD DERIVATION METHOD

Field Description: Height of Mother
(inches)

Location: 81-82 (4995...VAR)

Approved: 4/21/69

Revised: _____

Remarks: _____

Card Sources	Columns	Codes	Recodes*
2309	39-40	40-80, 99	*
1343	24-25	40-80, 99	*

*An asterisk in recode column means transfer codes verbatim.

VARIABLE FILE FIELD DERIVATION METHOD

Field Description: Pre-pregnancy Weight

Location: 83-85 (4996...VAR)

Approved: 4/29/69

Revised:

Remarks:

Card Sources	Columns	Codes	Recodes*
2309	33-35	050-350 999	*
1343	21-23	050-350, 360 999	*

*An asterisk in recode column means transfer codes verbatim.

VARIABLE FILE FIELD DERIVATION METHOD

Field Description: Weight Gain - Gravid **Location:** 86-P8 (4997...VAR)
(lbs.) **Approved:** 4/10/69
Revised: 5/8/69

Remarks: _____

Card Sources	Columns	Codes	Recodes*
See attached procedure		as given in lbs. 999 = unknown	

*An asterisk in recode column means transfer codes verbatim.

VARIABLE FILE FIELD DERIVATION METHOD

Field Description: Bright Gain - Gravid

Location: 86-88 (4997...VAR)

Approved: 4/10/69

Revised: 5/8/69

Method 11

Weight Gain During Pregnancy

Pre-pregnancy Weight: 2309 card, cols. 33-35. If no 2309 card then 1343 card, cols. 21-23.

Last Weight Prior to Delivery: 1351 card, cols. 23-25 codes 050-350, 357, 370, 372. If no 1351 card then 0344 card, cols. 25-27, codes 050-350.

Date of Delivery: See location 1103-1108 (5921...VAR; Date of Delivery) for date (date of birth).

Selection of card for weight prior to delivery:

1. For 1351 card - Use all cards for case. Check date in cols. 15-20 for most recent date with known weight. Determine interval between this date and date of delivery. If interval ≤ 6 weeks use card for weight data. If interval > 6 weeks or cols. 15-20 = all 9's, use 0344 card.
2. For 0344 card - Proceed as above using cols. 19-24 for date. If interval > 6 weeks or if only one 0344 card and data is unknown, classify case as unknown weight gain.

Computation of Weight Gain: Subtract pre-pregnancy weight from last weight prior to delivery and classify according to specified intervals. Weight loss = pre-pregnancy weight > last weight (negative value).

VARIABLE FILE FIELD DERIVATION METHOD

Field Description: Hematocrit, Gravida: **Location:** 89-91 (4998...VAR)
Lowest (Percent) **Approved:** 4/24/69
Revised: _____

Remarks: NOTE: Either card or both cards may be present for a case.

Use all available data.

Card Sources	Columns	Codes	Recodes*
1310	57-59 65-67 73-75	120-600, 999, 000 (Retain lowest known code. Code 00 is not considered lowest known code)	*
and All 2345 if present	22-24 31-33 40-42 49-51 58-60 67-69 76-78	997, 200-500, 998, 999 (Retain lowest code. Ranking is in ascending sequence as indicated. 997 is lowest known code and 998 is highest known code.) NOTE: Code 000 should only be used when a case has no other known value.	

*An asterisk in recode columnn means transfer codes verbatim.

VARIABLE FILE FIELD DERIVATION METHOD

Field Description: Hematocrit, Gravid: Location: 92 (4999....VAR)
Lowest (Percent) Approved: _____
Group/Interval Code Revised: _____

Remarks: _____

	Codes	Recodes*
Recode from	000	0
Location 89-91	997, 120-199	1
(4998....VAR)	200-249	2
Hematocrit - Gravid -	250-299	3
Lowest (Percent)	300-349	4
	350-600, 998	5
	999	9

*An asterisk in recode column means transfer codes verbatim.

VARIABLE FILE FIELD DERIVATION METHOD

Field Description: Hemoglobin, Gravid: Location: 93-95 (5000...VAR)
Lowest (Grams) Approved: 4/21/69
 Revised: _____

Remarks: _____

Card Sources	Columns	Codes	Recodes*
1310	33-35 41-43 49-51	040-200, 999, 000 (Retain lowest known code. Code 000 is <u>not</u> considered as lowest known code.)	*
ATI 3345	22-24 31-33 40-42 49-51 58-60 67-69 76-78	997, 050-170, 998, 999 (Retain lowest code. Ranking is in ascending sequence as indicated. Code 997 is lowest known code and code 998 is highest known code.)	*
		NOTE: Code 000 should only be used if a case has no other known value.	

*An asterisk in recode column means transfer codes verbatim.

VARIABLE FILE FIELD DERIVATION METHOD

Field Description: Hemoglobin, Gravida Location: 96 (5001...VAR)
Lowest (Grams) Approved: _____
Group/Interval Codes Revised: _____

Remarks: _____

	Codes	Recodes*
Recode from	000	0
Location 93-95	040-059,997	1
(5000...VAR)	060-079	2
Hemoglobin - Gravida -	080-099	3
Lowest (Gms)	100-119	4
	120-200,998	5
	999	9

*An asterisk in recode column means transfer codes verbatim.

VARIABLE FILE FIELD DERIVATION METHOD

Field Description: Meconium Location: 97 (5002...VAR)
 _____ Approved: _____
 _____ Revised: _____

Remarks: _____

Card Sources	Columns	Codes	Recodes*
0337	28	C (No) 1 (Yes)	*

*An asterisk in recode column means transfer codes verbatim.

VARIABLE FILE FIELD DERIVATION METHOD

Field Description: Blood Pressure

Location: 98 (5003...VAR)

(Systolic 160 or more and/or

Approved: 5/19/69

Diastolic 110 or more): Post Partum

Revised: _____

Remarks: _____

Card Sources	Columns	Codes	Recodes*
1360	33	0 = None 1 = 1st 2 weeks post partum only 2 = 3 to 8 weeks post partum only 3 = Combinations of codes 1 and 2 9 = Unknown	* * * * *

*An asterisk in recode column means transfer codes verbatim.

VARIABLE FILE FIELD DERIVATION METHOD

Field Description: Blood Pressure **Location:** 99 (5004...VAR)
(Systolic 160 or more and/or Diastolic 110 **Approved:** 5/19/69
or more): 24th week to Labor **Revised:** _____

Remarks: _____

Card Sources	Columns	Codes	Recodes*
0344 1360		Check all 0344 cards cols. 19-24 for Data and cols. 28-30 for Systolic Reading and cols. 31-33 for Diastolic Reading. See location 59-64 (4989...VAR) for determining LMP date. Compute LMP + >165 days = Period 24 weeks to labor. Scan all dates on all 0344 cards for dates in this period. Scan systolic and diastolic readings to see if any systolic reading >160 or more recode 1 (yes) or if any diastolic reading >110 recode 1 (yes) If neither systolic >160 or diastolic >110 then recode 0 (no). If all readings are = 999 classify as "unknown." If dates are = 9's classify as unknown. If no 0344 card or none in this period then 1360 card, cols. 31; code 0 = No, code 1 = Yes, code 9 = Unknown.	0 = No 1 = Yes 9 = Unknown

*An asterisk in recode column means transfer codes verbatim.

VARIABLE FILE FIELD DERIVATION METHOD

Field Description: Blood Pressure **Location:** 100 (5005...VAR)
(Systolic 160 or more and/or Diastolic **Approved:** 5/19/69
110 or more): Up to 24th week **Revised:** _____

Remarks: _____

Card Sources	Columns	Codes	Recodes*
See attached procedure		0 = No 1 = Yes 2 = Registered after 23rd week 9 = Unknown	

*An asterisk in recode column means transfer codes verbatim.

VARIABLE FILE FIELD DERIVATION METHOD

Field Description: Blood Pressure

(Systolic 160 or more and/or Diastolic

110 or more): Up to 24th week

Location: 100 (5CC5...VAR)

Approved: 5/19/69

Revised:

Check 0001 card if cols. 74-75 > to 24 classify as "Registered after 23 weeks"; or = 99 classify as "unknown." If < 23 then check all 0344 cards col. 19-24 for date and cols. 28-30 for Systolic Reading and cols. 31-33 for Diastolic Reading. See location 59-64 (4989...VAR) for determining LMP date. Compute LMP + 164 days = "End of Period up to 24th week." Scan all dates in this period. Scan systolic and diastolic readings to see if any systolic reading is ≥ 160 recode 1(yes) or if any diastolic reading ≥ 110 or more recode 1(yes). If neither systolic ≥ 160 or diastolic ≥ 110 then recode 0(no). If all readings = 999 classify as "unknown." If Dates are = to 9's classify as "Unknown." If no 0344 cards present or none in this period then check 1360 card, col. 30, Code 1 = yes, code 0 = no, code 9 = Reported Unknown.

VARIABLE FILE FIELD DERIVATION METHOD

Field Description: Blood Pressure **Location:** 101 (5006...VAR)
(Systolic 160 or more and/or **Approved:** 4/25/69
Diastolic 110 or more): Intra Partum **Revised:** 8/15/69

Remarks: _____

Card Sources	Columns	Codes	Recodes*
All 3336 cards	<u>Systolic</u> 28-30 44-46 60-62 <u>Diastolic</u> 31-33 47-49 63-65	Check all 3336 cards. Codes for Systolic readings = 040-284. Codes for Diastolic readings = 010-200. Blanks are acceptable code for both. Scan systolic and diastolic readings to see if any systolic reading >160 recode 1(yes) or if any diastolic reading >110 recode 1(yes). If card present and neither systolic >160 or diastolic >110 then recode 0(no). If all readings are = 999 and/or blanks classify as "Unknown." If no card then:	0 = No 1 = Yes 9 = Unknown
1360	32	0,1,9	*

*An asterisk in recode column means transfer codes verbatim.

VARIABLE FILE FIELD DERIVATION METHOD

Field Description: Albuminuria - **Location:** 102 (5007...VAR)
Proteinuria ≥5 gms Intra fartum **Approved:** 7/10/69
Revised: _____

Remarks: _____

Card Sources	Columns	Codes	Recodes*
1360	44	0 = No 1 = Yes 9 = Unknown	* * *

*An asterisk in recode column means transfer codes verbatim.

VARIABLE FILE FIELD DERIVATION METHOD

Field Description: Albuminuria -

Location: 103 (5008...VAR)

Proteinuria ≥ 5 gms: Post Partum

Approved: 7/10/69

Revised: _____

Remarks: _____

Card Sources	Columns	Codes	Recodes*
1360	45	0 = None 1 = First two weeks post partum only 2 = 3 to 8 weeks post partum only 3 = Combination of codes 1 and 2 9 = Unknown	* * * * *

*An asterisk in recode column means transfer codes verbatim.

VARIABLE FILE FIELD DERIVATION METHOD

Field Description: Albuminuria - **Location:** 104 (5009...VAR)
Proteinuria During Pregnancy **Approved:** 5/19/69
Revised: _____

Remarks: _____

Card Sources	Columns	Codes	Recodes*
A11 0344	34	<p>All card sources and columns must be checked. When more than one code is present the preferred code is:</p> <p>4 = 4+</p> <p>3 = 3+</p> <p>2 = 2+</p> <p>1 = 1+</p> <p>5 = Positive Unqualified</p> <p>7 = Trace</p> <p>8 = Questionable (all 8's or all 0's and 8's or all 0's and 9's or all 8's and 9's)</p> <p>0 = No (all 0's)</p> <p>9 = Unknown - all 9's</p>	

*An asterisk in recode column means transfer codes verbatim.

VARIABLE FILE FIELD DERIVATION METHOD

Field Description: Albuminuria- Location: 105 (5010...VAR)
Proteinuria: Up to 24 Weeks Approved: 5/19/69
 _____ Revised: _____

Remarks: _____

Card Sources	Columns	Codes	Recodes*
A11 0344 See attached procedure		0 = No 1 = 1+ 2 = 2+ 3 = 3+ 4 = 4+ 5 = 5+ 6 = Registered after 23rd week 7 = Trace 8 = Questionable 9 = Unknown	

*An asterisk in recode column means transfer codes verbatim.

VARIABLE FILE FIELD DERIVATION METHOD

Field Description: Albuminuria-

Location: 105 (5010...VAR)

Proteinuria: Up to 24 Weeks

Approved: 5/19/69

Revised:

Procedure

Check 0001 card if cols. 74-75 \geq to 24 classify as "registered after 23 weeks" (code 6) or = 99 classify as "unknown" (code 9). If < 23 then check all 0344 cards col. 19-24 for date and cols. 34 for Albuminuria-Proteinuria codes. See location 59-64 (4989...VAR) for determining LMP date. Compute $LMP + 164$ days = "End of Period up to 24th week." Scan all dates on all 0344 cards for Dates in this period. When more than one code is present the preferred code is:

- 4 = 4+
- 3 = 3+
- 2 = 2+
- 1 = 1+
- 5 = Pos. Unqualified
- 7 = Trace
- 8 = Questionable (all 8's
or all 0's and 8's or
all 0's and 9's or all
8's and 9's)
- 0 = No (all 0's)
- 9 = Unknown - all 9's
- 6 = Registered after
23 weeks

VARIABLE FILE FIELD DERIVATION METHOD

Field Description: Albuminuria-

Location: 106 (5011...VAR)

Proteinuria 24 Weeks to Labor

Approved: 5/19/69

Revised: _____

Remarks: _____

Card Sources

Columns

Codes

Recodes*

See procedures

0 = No
1 = 1+
2 = 2+
3 = 3+
4 = 4+
5 = 5+
7 = Trace
8 = Questionable
9 = Unknown

*An asterisk in recode column means transfer codes verbatim.

VARIABLE FILE FIELD DERIVATION METHOD

Field Description: Albuminuria-

Location: 106 (5011...VAR)

Proteinuria 24 Weeks to Labor

Approved: 5/19/69

Revised:

Procedure

Check all 0344 card cols. 19-24 for Date and cols. 34 for Albuminuria-Proteinuria code. See location 59-64 (4989...VAR) for LMP date. Compute LMP + >165 days = Period 24 weeks to Labor. Scan all dates on all 0344 cards for Dates in this period. When more than one code is present the preferred code is:

- 4 = 4+
- 3 = 3+
- 2 = 2+
- 1 = 1+
- 5 = Pos. Unqualified
- 7 = Trace
- 8 = Questionable (all 8's
or all 0's and 8's or
all 0's and 9's or all
8's and 9's)
- 0 = No (all 0's)
- 9 = Unknown - all 9's

VARIABLE FILE FIELD DERIVATION METHOD

Field Description: 08-60 Disease or
Conditions

Location: 108-255
(5013-5160...VAR)

Approved: 4/10/69

Revised: _____

Remarks: _____

Card Sources	Columns	Codes	Recodes*
See procedures		0 = Not present 1 = Before pregnancy only 2 = During pregnancy only 3 = Combination of 1 and 2 4 = Post partum only 5 = Combination of 1 and 4 6 = Combination of 2 and 4 7 = combination of 1, 2, 4 9 = Unknown	

*An asterisk in recode column means transfer codes verbatim.

VARIABLE FILE FIELD DERIVATION METHOD

Field Description: OB-60 Disease or

Conditions

Location: 108-255
(5013-5160...VAR)

Approved: _____

Revised: _____

Procedure

Check all 2360-5360 cards, col. 26-36 and 39-44. If these fields are all 0's recode all diagnoses or conditions as not present, Code = 0. No further search is necessary. If other than all 0's check cols. 45-80, check each 4 digit condition or disease field for the presence of any 3 digit code on the attached lists. If a code is present store the fourth digit (units position) in card field designated for that 3 digit condition or disease. Fourth digit codes = 1-7. Codes on the attached lists are grouped under summary headings. If card(s) present and none of the conditions or diseases within a group are present, then check col. in brackets (at Summary Heading). If code = 9 then recode all conditions as unknown (code = 9) for this group. If code is not equal to 9 recode all conditions or diseases as not present (code = 0).

(One tape location will be allocated for each disease or condition. Use binary code when putting on tape. per BK 6/16/69)

NOTE: There are 3 attachments.

VARIABLE FILE FIELD DERIVATION METHOD

Field Description: OB-60 Disease or Location: 108-255
Conditions (5013-5160...VAR)
Approved: _____
Revised: _____

Diseases or Conditions Obstetric Diagnostic Summary OB-60

CODE NAME

Cardiovascular (Col. 26=9)

011 Organic Heart Disease
 012 No sympt. on exertion
 013 Sympt. on ordinary activity
 014 Sympt. on limited activity
 015 Sympt. on bed rest
 016 Rheumatic fever
 017 Thrombosis and/or Phlebitis
 018 Regional incr. in body heat
 019 Fever 100.4° or above
 020 Regional Swelling
 021 Palpable thrombus
 022 Vein tenderness
 023 Embolization
 024 Other

Pulmonary (Col. 27=9)

025 TBC, Active
 026 Pos. sputum culture
 027 Pos. culture - other
 028 Pos. guinea pig inoculation
 029 X-ray evidence of presence of disease
 030 X-Ray evidence of progression of disease
 031 TBC, Inactive
 032 Pneumonia
 033 Pos. culture
 034 Viral and/or serolog. evidence
 035 Chest X-Ray evidence

CODE NAME

Pulmonary, cont.

036 Bronchial Asthma
 037 Acute Asthma
 038 Status Asthmaticus
 039 Thoracic surgery
 040 Other

Blood (Col. 28=9)

041 Anemia
 042 Abnor. low serum iron
 043 Abnor. high IBC
 044 Abnor. high protoporphyrin
 045 Abnor. peripheral RBC smear
 046 Abnor. bone marrow smear
 047 Clinical response to iron therapy
 048 Abnor. hemaglobin S electrophoresis
 049 Sickling in peripheral blood
 050 Other findings in anemia
 052 Coagulation defect
 053 Abnor. low prothrombin
 054 Abnor. low preconvertin
 055 Abnor. low fibrinogen
 056 Abnor. prolonged clot. time
 057 Clin. response to administ. of fibrinogen
 058 Other findings in coagulation defects
 059 Other

VARIABLE FILE FIELD DERIVATION METHOD

Field Description: 08-60 Disease or
Conditions

Location: 108-255
(5013-5160...VAR)

Approved: _____

Revised: _____

Diseases or Conditions
Obstetric Diagnostic Summary
08-60

<u>CODE</u>	<u>NAME</u>
<u>Metabolic and Endocrine (Col. 29=9)</u>	
060	Diabetes Mellitus
061	Any blood sugar 200 mg. percent or more
062	Insulin therapy or oral hypoglycemic analogue
063	Insulin reaction
064	Diabetic coma
065	Keto-Acidosis
066	Duration 5 years or more
067	Abnormal Glucose Tolerance Test
068	Hypothyroidism
069	Abnor. low BMR
070	Abnor. low PBI
071	Abnor. low BEI
072	Abnor. low I 131 uptake
073	Clinical response to thyroid
074	Hyperthyroidism
075	Abnor. high BMR
076	Abnor. high PBI
077	Abnor. high BEI
078	Abnor. high I 131 uptake
079	Clinical response to therapy
080	Thyroid surgery
081	Other

<u>CODE</u>	<u>NAME</u>
<u>Veneral (Col. 30=9)</u>	
082	Syphilis
083	Pos. Serology
084	Pos. cerebrospinal fluid
085	Pos. treponema immobilization test
086	Pos. dark field
087	Gonorrhea
088	Pos. culture
089	Pos. smear
090	Other

<u>CODE</u>	<u>NAME</u>
<u>Urinary Tract (Col. 31=9)</u>	
091	Acute and Chronic Glomerulonephritis
092	KUB infection
093	Fever 100.4° or above
094	CVA tenderness
095	Pos. urine culture
096	Pyuria (15 WBC/HPF)
097	Hematuria (15 RBC/HPF)
098	KUB tumor
099	KUB surgery
100	Other

VARIABLE FILE FIELD DERIVATION METHOD

Field Description: OB-60 Disease or Location: 108-255
Conditions (5013-5160...VAR)
Approved: _____
Revised: _____

Diseases or Conditions Obstetric Diagnostic Summary OB-60

CODE NAME

Gynecological (Col. 32=9)

102 Infertility
 103 Incompetent cervix
 104 Surgery for incompetent
 cervix
 105 Vaginitis
 106 Leiomyoma
 107 Other gynecologic tumor
 108 Gynecologic surgery
 109 Other

Neurological and Psychiatric (Col. 33=9)

110 Convulsive Disorder
 111 Convulsions during pregnancy
 112 Mental retardation
 113 Organic brain disease
 114 Psychosis and neurosis
 115 Other neurologic or
 neuromuscular disease
 116 Alcoholism
 117 Drug habitation and
 addiction
 118 Other

Gastrointestinal (Col. 34=9)

119 Cholecystitis
 120 Cholelithiasis
 121 Hepatitis
 122 Appendicitis
 123 Colitis, Ileitis

CODE NAME

Gastrointestinal, cont.

124 Hiatus Hernia
 125 Peptic ulcer
 126 GI surgery
 127 GI tumor
 128 Other

Integument and Appendages (Col. 35=9)

130 Burns - if hospitalized
 131 Breast disorder
 132 Other

Complications of this Pregnancy (Col. 36=9)

133 Hyperemesis Gravidarum
 136 Hyramnios
 Shock:
 143 Anesthetic
 144 Hemorrhagic
 145 Septic
 146 Positional (vena cava
 syndrome)
 147 Anesthetic Accident, other

Complications of Puerperium (Col. 39=9)

161 Puerperal infection

VARIABLE FILE FIELD DERIVATION METHOD

Field Description: OB-60 Summary

Location: 256-268
(5161-5173...VAR)

Classification _____

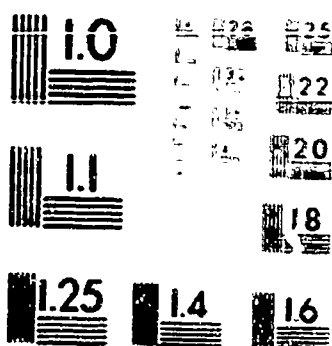
Approved: _____

Revised: _____

Remarks: _____

Card Sources	Columns	Codes	Recodes*
2360	26-36, 39-40	0 = No diseases/condition 1-7 = Number as given 8 = 8 or more 9 = Unknown	* * * *

*An asterisk in recode column means transfer codes verbatim.



MICROCOPY RESOLUTION TEST CHART
NATIONAL BUREAU OF STANDARDS-1963-A
50% ISO SPEED FILM
4X

CONTINUED ON NEXT FICHE